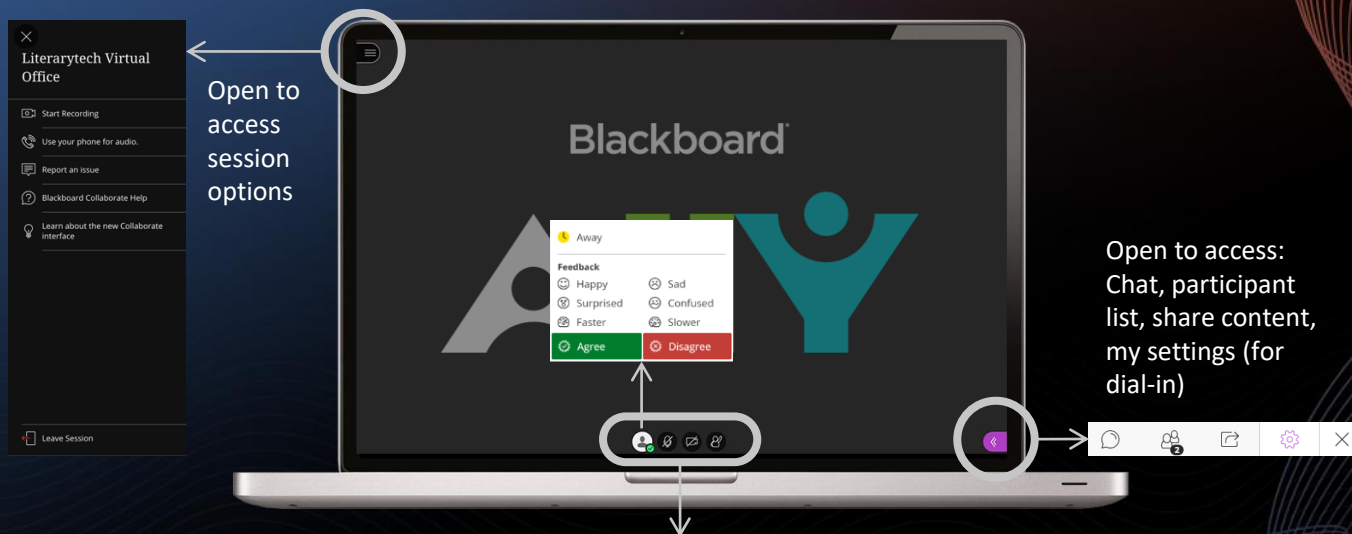


Welcome to Blackboard Collaborate. We will begin the session shortly.



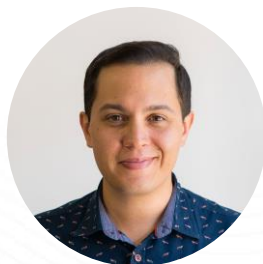
Click the silhouette to add a picture | Click the check mark to indicate status |
Turn on audio or video | Raise your hand

Note: some options are disabled for today's webinar

Blackboard Ally Roadmap

November 2021

Meet the Team



Dan Loury

Sr. Director, Product Management

Agenda

- Product Vision
- How Roadmaps Work
- Recently Released
- Coming Up Next
- Work In Progress
- Long-term Highlights

Forward-Looking Statement

Statements regarding our product development initiatives, including new products and future product upgrades, updates or enhancements represent our current intentions, but may be modified, delayed or abandoned without prior notice and there is no assurance that such offering, upgrades, updates or functionality will become available unless and until they have been made generally available to customers.

BLACKBOARD ALLY SOLUTIONS

One Consistent Approach



Ally LMS



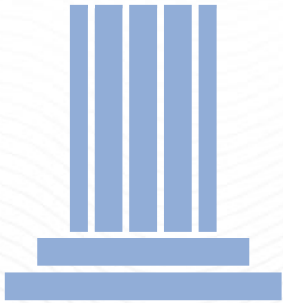
Ally Web / WCM

BLACKBOARD ALLY VISION

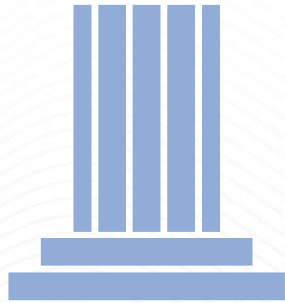
Personalized Experiences for Ally Built on Five Key Pillars



COMMUNITY



ENGAGEMENT



UNIVERSAL DESIGN



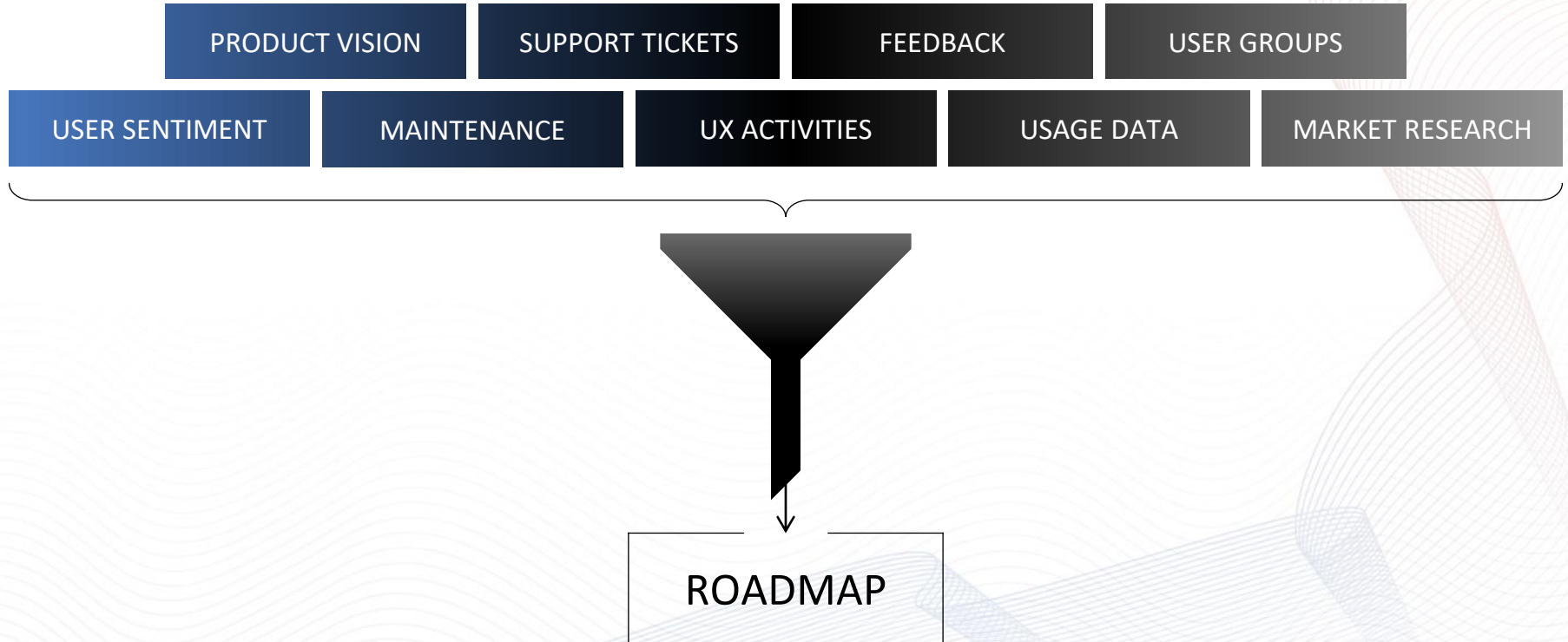
SCALABILITY



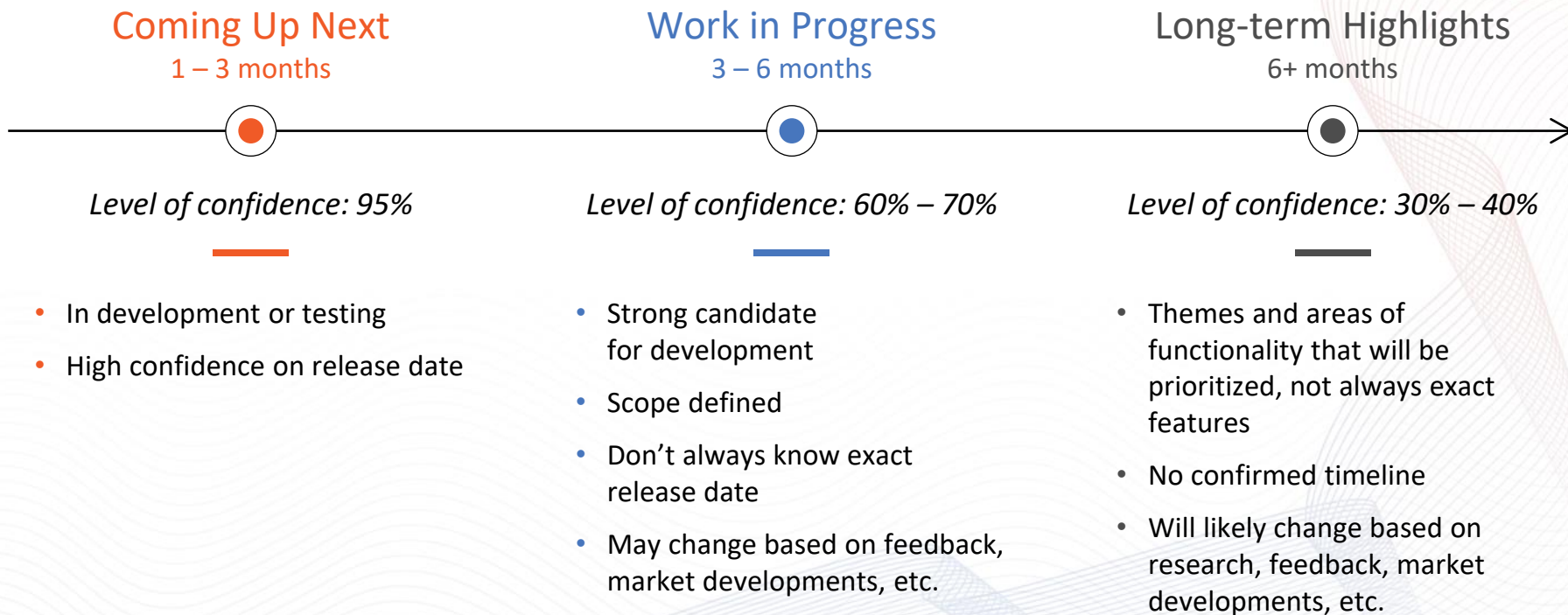
STUDENT SUCCESS



How We Determine The Roadmap?



How Does The Roadmap Work?



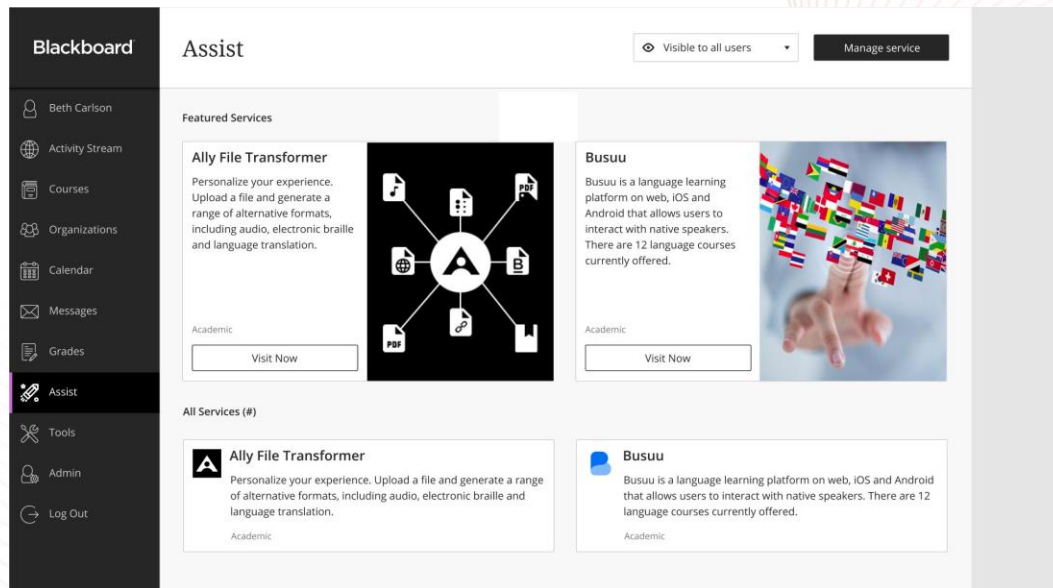
Recently Released

Features and Improvements

NOW AVAILABLE IN US / CANADA
GLOBAL RELEASE – Q4 2021

Ally File Transformer for Blackboard Assist

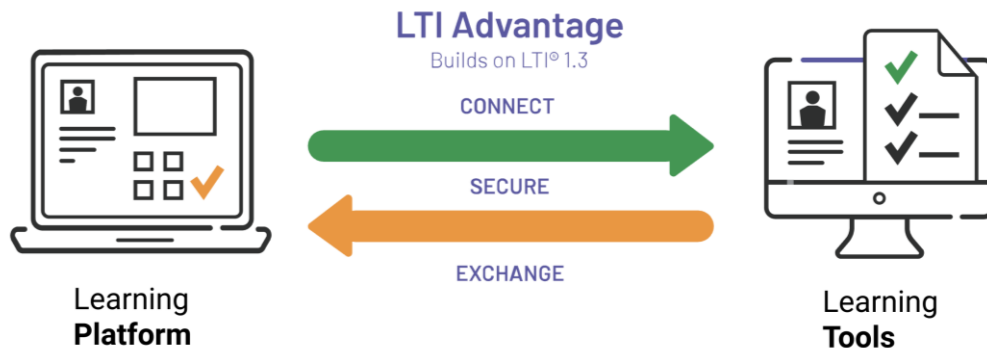
- Available in Learn through Blackboard Assist
- No Ally license required
- Empowers users to create alternative versions of content better suited to their needs



NOW AVAILABLE

LTI 1.3

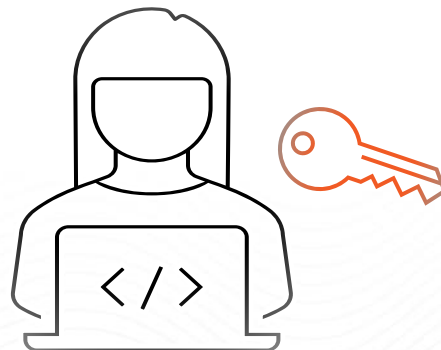
- Support for LTI 1.3 to take advantage of recent configuration and security improvements
- Focused on our 3 major LMS integrations (Learn, Canvas, and Brightspace)



NOW AVAILABLE

Developer Keys for Canvas

- Aligning with provider standards (REST API)
- Granular control over permissions
- Simplifies setup process



Coming Up Next

1 – 3 Months

1 – 3 MONTHS

Instructor Feedback for WYSIWYG content

- Feedback directly embedded in content editor
- Live score while editing
- Highlights within the editor
- Batch remediation

IN BETA

Conceptual mock-up subject to change without notice

The screenshot displays a WYSIWYG content editor interface. At the top, a toolbar includes various editing tools. A red banner at the top of the editor area reads "Text fragments with insufficient contrast". On the right side, an "Accessibility score" panel shows a gauge at 22% and a message: "This item contains text with insufficient contrast". Below this, it offers suggestions: "Try one of these colors instead:" with three color swatches, and a checkbox for "Apply to all 8 occurrences". The main content area is titled "Summary of Van Gogh's life" and contains several sections: "Highlighted work" and "Emerging artist". Both sections have text highlighted with red dashed borders, indicating accessibility issues. The "Highlighted work" section lists several of Van Gogh's paintings, including "Olympia" (1865), "The Potato Eaters" (1885), and "Self-Portrait with Bandaged Ear" (1889). The "Emerging artist" section contains a paragraph about Van Gogh's early life and work. Below the text is an image of a painting, "The Potato Eaters". At the bottom of the editor, it says "Artistic breakthrough". The bottom right corner of the editor area shows "431 WORDS. POWERED BY TINY".

ANTHOLOGY + BLACKBOARD

Institution Page

Dan Loury

Activity Stream

Courses

Organizations

Calendar

Messages

Grades

Assist **NEW**

Tools

Admin

Sign Out

Current Courses ▼

Upcoming Courses →



Search your courses

Filter

All Courses ▼

25 ▼

items per page

Assorted Dates

bbworld-ally-demo

BbWorld '21 Ally Demo Original Course View

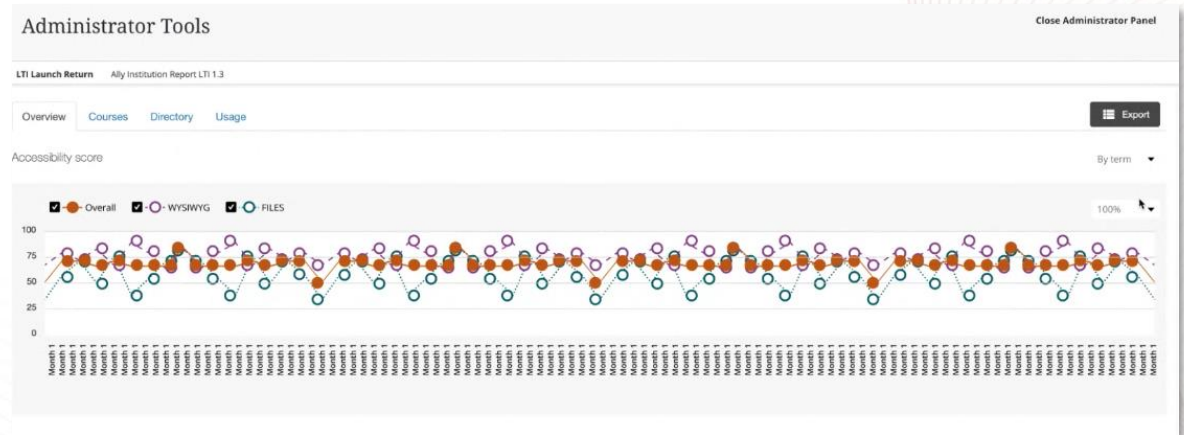
Dan Loury | More info ▼



1 – 3 MONTHS

Institutional Reporting Updates

- Improved readability for the Accessibility Score over time graph
- Timeline navigation



IN DESIGN

Conceptual mock-up subject to change without notice

ANTHOLOGY + BLACKBOARD

1 – 3 MONTHS

D2L New Learner Experience

- Extends Ally scanning and scoring of content to new experience
- Alternative formats



IN DEVELOPMENT

Conceptual mock-up subject to change without notice

ANTHOLOGY + BLACKBOARD

Work In Progress

3 – 6 Months

3 – 6 MONTHS

Video Scoring and Guidance

- Scanning and scoring of video content in the LMS/VLE and 3rd party providers
- Course and institutional reporting enhancements
- Feedback and guidance
- Upload captions to videos



LONGER TERM ROADMAP

Conceptual mock-up subject to change without notice

ANTHOLOGY + BLACKBOARD

Long-term Highlights

6+ Months

6+ MONTHS

Improved STEM Support – Mathematical Equations

- Scanning and conversion of mathematical equations for:
 - Word / PPT documents
 - WYSIWYG content
 - PDF documents

The image shows the equation $w_{ij} = \frac{\tilde{w}_{ij}}{\sqrt{\sum_j \tilde{w}_{ij}^2}}$ with green bounding boxes highlighting specific parts: the variable w_{ij} , the numerator \tilde{w}_{ij} , the summation symbol \sum , the index j , and the squared term \tilde{w}_{ij}^2 . Small numbers 1, 2, 3, and 4 are placed near these elements to indicate the detection of different components.

LONGER TERM ROADMAP

6+ MONTHS

WCAG 2.1 Updates

- Extend accessibility checklist with additional WCAG 2.1 checks
- Focus on general readability and mobile-friendliness
 - Orientation (Mobile - AA)
 - Reflow (Mobile - AA)
 - Text Spacing (Low Vision - AA)



LONGER TERM ROADMAP

Conceptual mock-up subject to change without notice

ANTHOLOGY + BLACKBOARD

Additional Items

CSV Export Enhancements

- Departmental scores and other applicable data points
- Greater control over data included in the CSV exports

Improved / Automated Fixing

- Improved alt-text management for images in LMS tools
- Improved fixing through instructor feedback
 - PDF without title or language
- Automated fixing
 - Document with contrast issues

Ally for Websites and WCM

- Promotes the value of accessible content outside of the LMS
- Provides a consistent approach to making course and web content more accessible



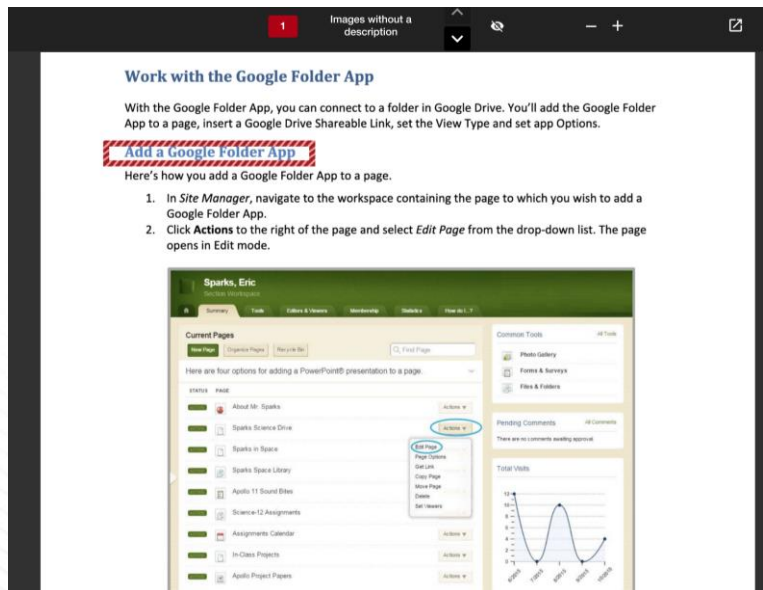
1 – 3 MONTHS

Webpage and Document Feedback

- Malformed lists
- Tables without headers
- Redundant text in links or buttons
- Broken links

IN DEVELOPMENT

Conceptual mock-up subject to change without notice



How to add descriptions to images on a webpage

1. Go to [the affected webpage](#) on your website or Content Management System (CMS). Ensure you're in **Edit** mode.
2. There are **3 images** on this page that are **missing a description**. Use the preview on the left to help locate them.
3. Some CMSs provide multiple [ways to add image descriptions](#). Often, you'll have to edit in the **HTML** or **Source Code**. Locate the **image element** in the code and add an **'Alt Attribute'**.

An image element may vary between CMSs but looks similar to:

```

```

An **'Alt Attribute'** provides text alternatives to the image. For example:

```
alt="A brief description of the image."
```

4. Write a **clear but brief description** between the **'Alt Attribute'** quotes.

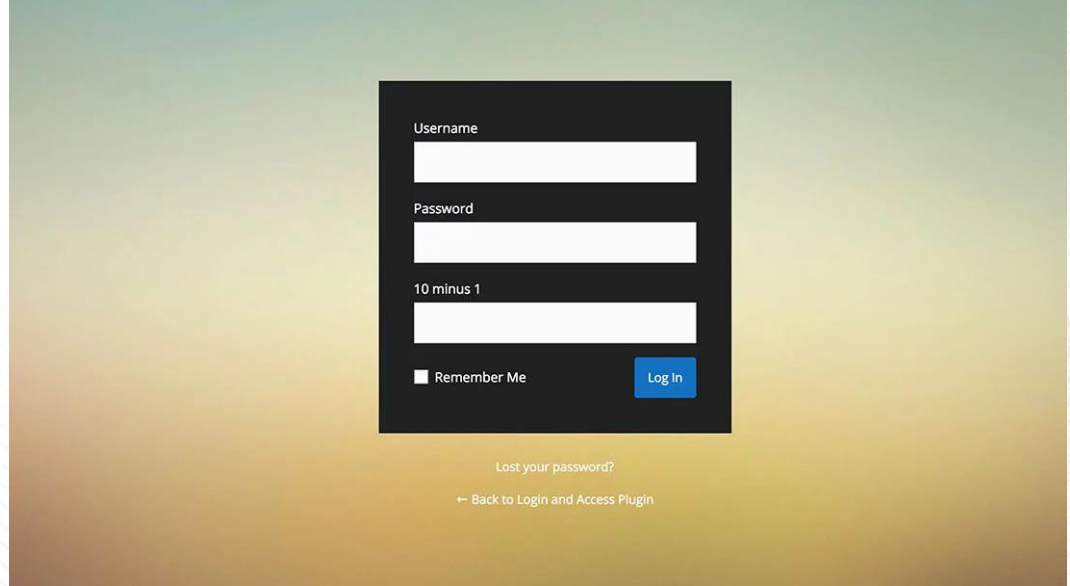
How to write a good description

ANTHOLOGY + BLACKBOARD

6+ MONTHS

Password Protected Content

- Allow for (static) content behind password to be scanned and checked
- Full range of public and private content

A conceptual mock-up of a password login form. The form is a dark gray rectangle centered on a background with a green-to-yellow gradient. It contains three white input fields labeled 'Username', 'Password', and '10 minus 1'. Below the fields is a checkbox labeled 'Remember Me' and a blue 'Log In' button. At the bottom of the form, there is a link 'Lost your password?' and a link '← Back to Login and Access Plugin'.

LONGER TERM ROADMAP

Conceptual mock-up subject to change without notice

ANTHOLOGY + BLACKBOARD

Additional Items

Domain Scoring

- Ally already shows evolution of accessibility score of entire website
- Show accessibility score evolution by (sub)domain

Re-Scan On Demand

- Broken link re-scan for WCM in content feedback and institution reports
- Allow for re-scan of domains to be triggered from the accessibility report

Research and impact

- Ally has a wealth of course content and accessibility data
- Continued focus on new data studies, whitepapers and other research
- Community activities around data and research

<https://tinyurl.com/ILS-doctoral>
<https://tinyurl.com/chooseyourformat>






Implications for Addressing Accessibility Barriers at Scale

Given the number of files with critical accessibility issues added to the LMS during 2019-20, a data-informed approach is essential to addressing issues at scale. Real-time insights empower institutions to improve remediation workflows, allocate resources strategically, and take a more proactive approach to supporting diverse student needs. Ally's **Institutional Report** provides [live, different analytics tools](#) for tracking progress and measuring impact at both the issue-level and course-level. Reporting can help foster collaboration across campus units, such as library services, equity and inclusion, and disability support. Beyond just content accessibility, the course content breakdowns across LMS tools in the Report offer instructional design insights as well. With CSV reports and REST APIs, institutions can also aggregate their Ally data with LMS (including Blackboard data) and institutional data.



Alternative Formats Usage

Ally automatically generates 8 different **Alternative Formats (AF)** of files uploaded to the LMS, and makes these available to all students in their courses. During the Fall 2019 term, there were **over one million formats downloaded** at Doctoral-granting universities, and a median download rate of **1.3 downloads per FTE**. While some of the universities represented in the data set deployed strategies to promote the formats to students, most commonly through an LMS announcement, others simply made the formats available and allowed students to discover them on their own.

The weekly AF activity appears to reflect broader LMS usage, where engagement is highest at the start of the term, steadily during the middle of the term, sharply drops during a holiday, and spikes back up toward the end of the term. The number of downloads per unique user at the peak start and peak end of the term were both around **4 downloads per user**. When considering drop-out rate and other factors affecting the number of students engaged with the LMS at the end of term, the consistent download rate per user and total downloads suggest the formats offer sustained value to many students.

During the Fall 2019 term, the most popular AF download was the **Tagged PDF format** generated from Word and PowerPoint documents, followed by the **mobile-friendly HTML format** from PDFs, PowerPoint, and Word docs. Those were followed by the **OCR'd PDF** from scanned PDFs, ePub, and MP3, all downloaded at a similar rate. Next was the **Electronic Braille** format, downloaded at a considerably lower rate given its specialized use. The **Language Translation** and **Beeline Reader** formats were available in a limited number of courses and had the fewest downloads.

Visit the [Ally Help Site](#) for more about the Alternative Formats.



Tools like Ally make us feel like we're independent learners. It gives us multiple text options so we can see what is most effective for the ways we learn.

- Andrew Phuong; Student, UC Berkeley

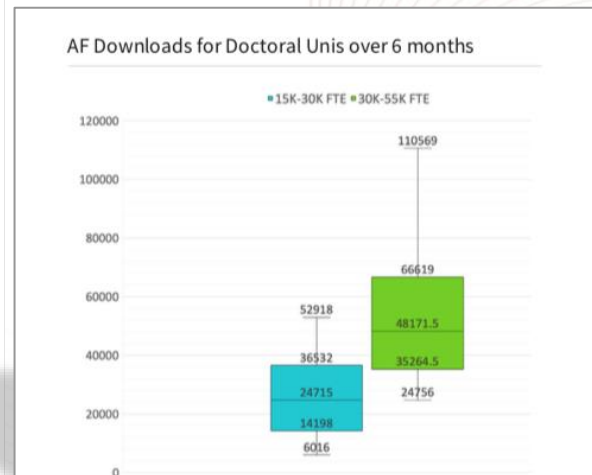
AF Downloads for Doctoral Units over 6 months



Category	15K-30K FTE	30K-55K FTE
1	36532	52918
2	24715	66619
3	14198	48171.5
4	6016	35264.5

Avg. Weekly AF Activity: 27 Doctoral Units, F19 Term



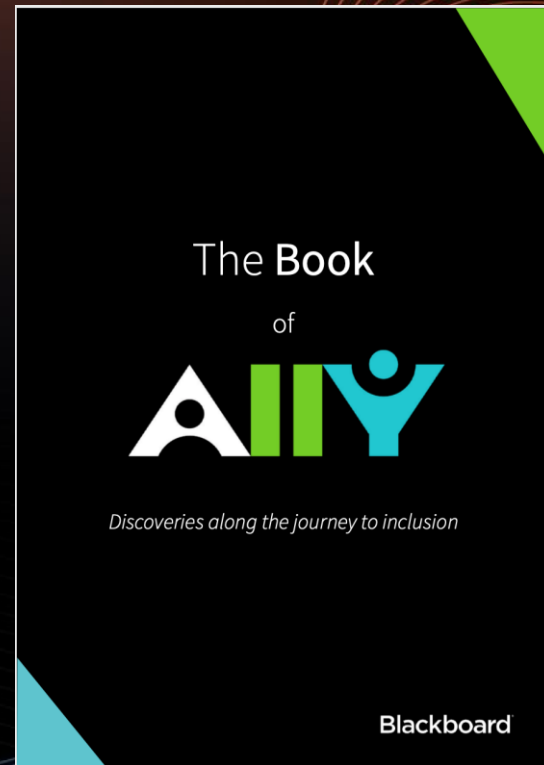


Checkout these additional resources!



<https://tinyurl.com/bballycourse>

<https://go.blackboard.com/book-of-ally>



Join the Ally Community of Accessibility Heroes



usergroup.ally.ac

Blackboard®



